

# Sidelite installed (test fit)

---



# Glazing another sidelite

---



# Transom window gets finish paint

---



# Entrance primed, ready to paint

---



# Middle float glass has a bump

---



# Scraping paint from old trim

---



# Float glass re-installed

---



# **Porch door has red transom glass**

---





# 1860 door for 2piece bathroom

---



# 4panel back entrance door

---



# Painted backside

---



# Door to the basement

---



# Original black & white paint

---



# Another view of the porch door

---



# Box latch on the porch door

---



# More 1860 flooring being installed

---





# Bedroom floor installed

---



# Sledgehammer to make it tight

---



# Roll out the window putty

---



**Pack it tight with a putty knife**

---



# Tapered edges

---



**Clean the glass before it dries**

---



**On to the next pane**

---



# Porch entrance door & transom

---





# Antique cast iron lights

---



# Wavy float glass in the transom

---



# Finish the glazing

---



# Clean the glass and then install

---



# Sidelites in place

---



# Sewing room floor installed

---



# Another bedroom floor finished

---



**And another**

---





**And another – time for finishing!**

---



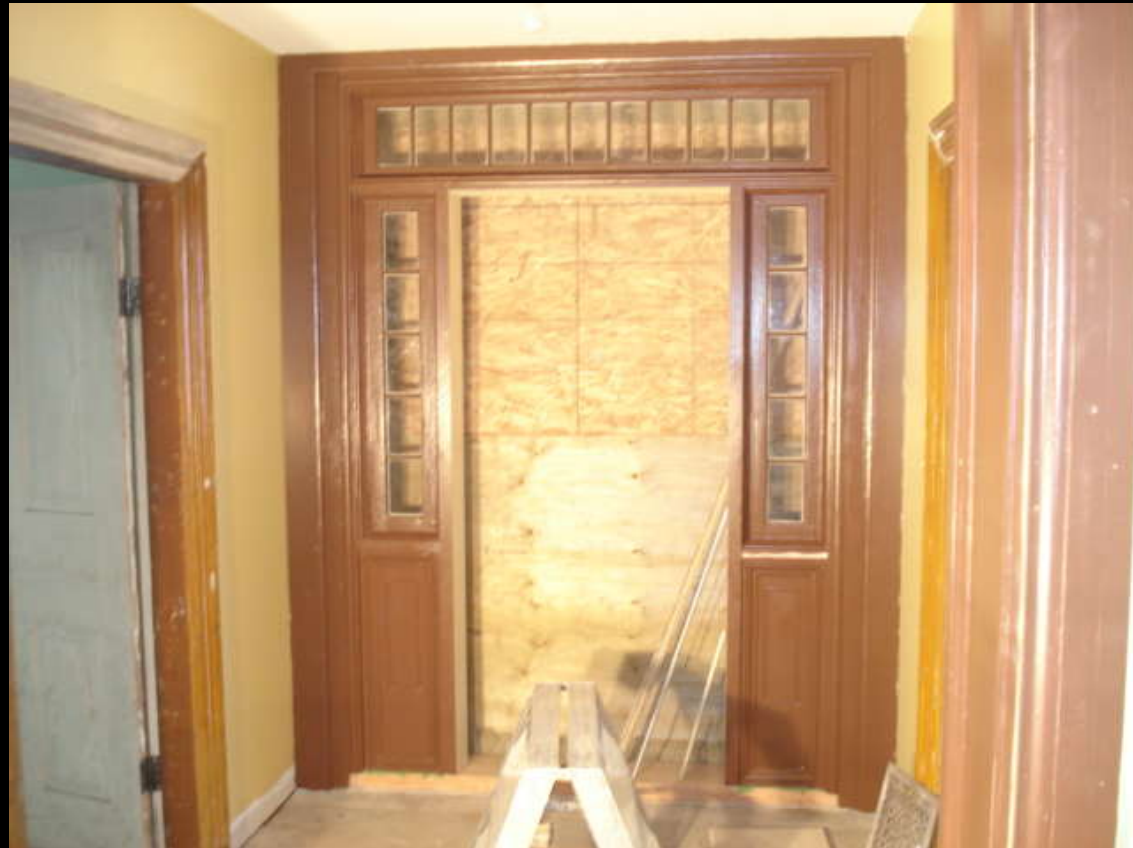
# Floor of the cutting room

---



# First coat of paint

---



# Original baseboard primed

---



# **The storm hits and Mother Nature leaves snow patterns on the windows at our house**

---



**Sinclair was a type of oats stored in the Barn granary, now the boards are being prepped for the kitchen ceiling.**

---



# **New set of basement stairs**

---



**Reclaimed spindles and newelpost for  
the basement stairs (from one of the  
oldest houses in Clinton)**

---





# **Kitchen ceiling boards and trim for the main floor addition**

---



**And more trim that's been primed and painted, ready to install**

---



# Granary boards await prepping

---



# Ice on the Bayfield River

---



# Farewell for the Holidays

---

